

BOXING CLEVER

SOUND LEISURE MILESTONES IN MUSIC TECHNOLOGY 2008

ON SITE GUIDE

SEE WHAT'S INCLUDED IN YOUR
MILESTONES IN MUSIC JUKEBOX
AND HOW TO SET IT FREE!



SOUND LEISURE 30 YEARS OF JUKEBOX INNOVATION!

Sound Leisure Limited was founded by Alan Black and Eddie Moss in 1978. Since the launch of its first jukebox in 1980 Sound Leisure has become a name synonymous with high quality and innovative British built products. Still owned and run by the original directors, the company remains the oldest single ownership company in the sector. During this period Sound Leisure has brought together some of the finest craftsmen and technical minds in the leisure industry. The Research and Development team continually strive to create cutting edge products that are reliable and simple to operate and service.

Dedication to ongoing Research and Development has been a key factor in the

success of Sound Leisure since its inception. Our reputation for innovation and creativity is second to none within the sector. SL's development engineers are backed by a production workforce committed to maintaining the highest quality product achievable. Customer feedback from operators and sites heavily influence ongoing product development and SL's efficient management structure enables quick decisions to be turned in to quick product enhancements. In 2006 the Manufacturing Advisory Service (MAS - A department of Trade and Industry) recognised Sound Leisure's excellence as a key innovator in the region. In addition, Sound Leisure were privileged to be asked to launch the "Inside Industry Programme"

in partnership with the Manufacturing Advisory service. The programme aims to improve regional manufacturing by promoting best practice within core business areas, enabling companies to learn from the strengths of each other. Twenty Yorkshire manufacturing companies attended the programme launch at Sound Leisure centred on "Innovation". Delegates were joined by politicians and local press to celebrate the event which gave an insight in to the structure and processes promoted within Sound Leisure to encourage innovation and creativity throughout all levels of the company. Sound Leisure continue to work closely with the "Inside Industry" programme and the Manufacturing Advisory Service.

Milestones in Music Technology (audio)

When launched, Sound Leisure's 'Milestones in Music' technology moved jukebox development to a new level. With the capacity to store up to 30,000 audio tracks on its local hard-drive this eliminates the need for a broadband connection. The machine features every single audio track to appear in the UK Top 40 since 1952, plus a wealth of other essential tracks and albums. With music genres as diverse as '50's ballads' to 'Ska' the 'Milestones In Music' offers customers the ultimate music library.

Now, in another major leap forward, 'Milestones in Music AV' is available and includes every UK Top 10 video since 1980.

Milestones in Music AV Technology (Audio & Video)

Now, in another major leap forward, 'Milestones in Music AV' is available and includes every UK Top 10 video since 1980. As with the audio version, the 'Milestones in Music AV' follows Sound Leisure's principle of profiling the location to filter out unsuitable tracks at specific times, i.e. offensive language or visual imagery during daytime and early evening periods. Subsequent music and video updates of this type are automatically hidden.

Both audio and AV versions utilise Sound Leisure's powerful date search facility which can be used to locate any top 40 chart listing from 1960 to present day.

What was number one on the day YOU were born?

EVENTS, BINGO AND INSTANT PHOTOS! YOU'LL BE AMAZED AT WHAT YOUR JUKEBOX CAN ACTUALLY DO!



Dynamic Photo Display (DPD)

This feature allows you to display your own adverts and photos on-screen. Simply take a picture with a digital camera or create a Jpeg advert, then quickly upload them to the jukebox directly via a USB memory stick to display on screen. Great for birthday's and quick venue promotions!



Whats On Events Guide

This feature enables a calendar of upcoming events to be inputted and displayed on the jukebox touch screen where its always handy for customers to check what's coming up in the venue. Pre-programmable for years in advance, the 'Whats On Guide' automatically displays regular on screen advertisements to promote any site events due to occur in the next 14 days. This gives customers a single point for information about the activities in your venue, ensuring they always know whats on and when!

whatson:



Sporting Events Guide

Pre-loaded with team logo's for every major UK and international football and rugby team. Using the Sports Event Advert facility, quick on screen adverts featuring the teams logo's can quickly be created to promote matches shown in your venue.

SPORTING EVENTS GUIDE

BINGO



Bingo

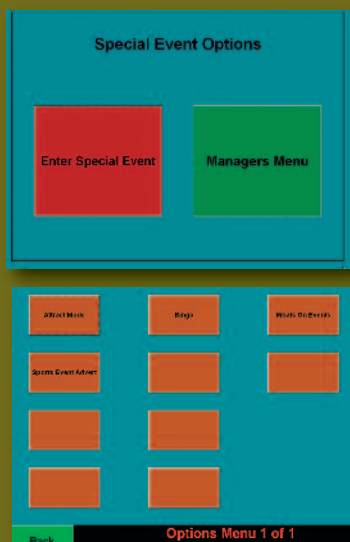
You can now play Bingo on any location without the need for a license as long as the stake and aggregate prize does not exceed £2000.00 in any rolling 7 day period. MIM Bingo is a great way of attracting customers to the venue on quiet nights, featuring attractive on screen graphics and automated audio calls. The Auto Play facility makes it extremely simple to operate and regular on screen instructions ensure the winners keep coming!



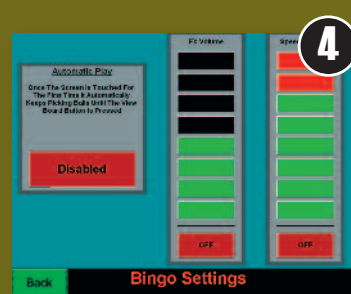
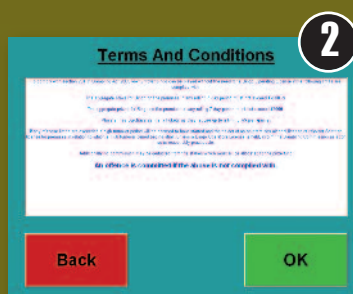
BEFORE YOU START!

ACCESSING THE EVENTS SCREEN.

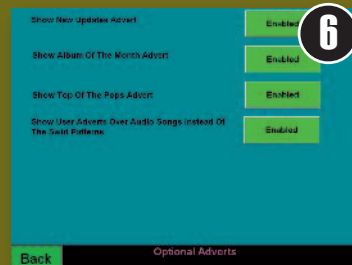
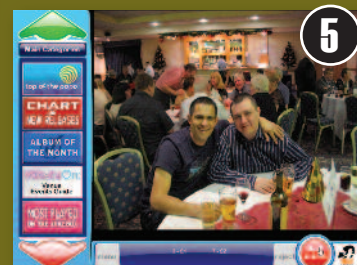
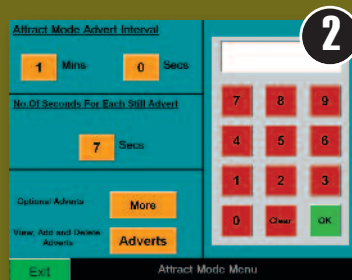
In order to set up any of the features on your jukeboxes special events you first need to access the special events menu. This is done by turning the Events key Switch.* This will enable the Special Events option Screen. Press **Managers Menu**, This will take you into the main options menu. Please note that the switch location will vary depending on the type of jukebox. Most wallboxes, the switch is located on the left hand side of the cabinet. Floorstanding machines have the switch located on the back of the cabinet.



START A BINGO GAME. 1. Select **Start Bingo Game**. | 2. The terms & conditions display relating to the gaming law. By pressing **OK** you are accepting these terms & conditions | 3. Enter the amount you wish to play for. On this screen if you press **Settings** you can alter the relation to the background sound effects and Bingo Bobs Voice - see 4. | Press **start the game**. | 5. The Game will start. Press the screen to release a new ball. To check off the balls at any point press **View Board**. This will bring up the board view - see 6. you can check off each ball in turn by pressing the relevant ball.



DYNAMIC PHOTO DISPLAY (DPD) 1. Insert the memory stick containing your jpg images into the USB slot on the front of the MIM PC. | 2. Select **Attract Mode** from the main special events screen. Then press **Adverts**. Then on the next screen **Add Advert** | 3. The images on your memory stick will display. Either select the images you want to copy to the jukebox by touching the advert image then pressing **Copy Selected Adverts** or press **Copy ALL Adverts** to select and copy the entire contents of the memory stick. | 4. The jukebox will confirm when the items have been copied. | 5. The images will now display at intervals on the main screen of the jukebox. | 6. If your jukebox is a MIM AV version, by pressing **More** at step 2 you can display the images on any external screens. These will display if an audio track is playing instead of the default "swirl" patterns.



CREATING A NEW SPORTING EVENTS ADVERT

1. Press **New Sporting Advert** (by pressing **Edit Sporting Advert** you are able to edit existing adverts) | 2. Enter the date and the time of the game. If the game is an international game press **International**. This will enable international teams to be selected in the next stage of the process. | 3. Select the teams by following the instructions on screen. | 4. Enter a title and a message by pressing **Type Title** and **Type Message** and typing in your message using the on - screen keyboard. | 5. Enter the details of when your advert should start and finish (i.e the day after the game) and when the adverts should be shown. | 6. Similarly enter which days your advert should be shown. | 7. Your advert will now be shown as an attract mode advert on the main jukebox screen.



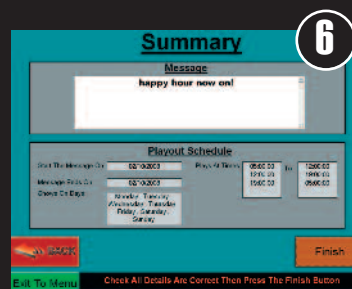
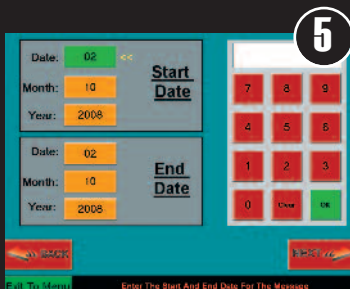
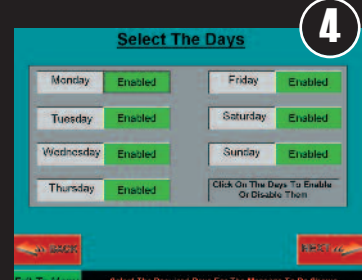
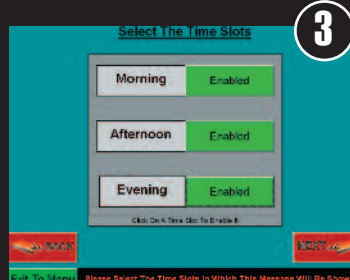
CREATING A NEW EVENT IN THE WHATSON GUIDE

1. Press **New Whats On Event** | 2. Enter a title for the event | 3. Enter the start time if your event has one. | 4. Enter the full details of the event | 5. You can allow the event details to be repeated on a weekly or monthly basis. Select the frequency of the event. | 6. Enter a start date. Then after pressing **next** enter an end date for your promotion | 7. Select the day or days the event occurs then press **next**. | 8. Once you return to the main jukebox screen your event will appear in the WhatsOn Guide. The Event will also be displayed as an Attract mode advert on the main screen and as scrolling txt if the jukebox is an MIM AV Version.



CREATING A SCROLLING TEXT MESSAGE* (AV Only)

1. Press **Add a New Message**. | 2. Enter the message text using the on-screen keyboard. | 3. Select the time slot that the scrolling text is to be displayed. Morning, Afternoon or Evening, or a combination of the three. | 4. Select the days that the scrolling text is to show. | 5. Enter the date that the scrolling text is to start displaying and the date it is to stop being displayed. | 6. A summary is displayed showing all the information you have just entered. Press **Finish**. | 7. This is how the scrolling text looks when running along the bottom of the video. | 8. **Adding a Quick Message** : From the initial screen (1) Pressing **Add a New Quick Message** allows messages to be added quickly to existing templates by just adding a few key items such as names or dates.



If you would like any more information regarding how to use your Sound Leisure Digital jukebox technology please contact us at:

SOUNDLEISURE LIMITED
Sandleas Way
Leeds
LS15 8AR

T: 0845 230 1775
E: Digitech@soundleisure.com

www.soundleisure.com

